

Quick Start

Important!

In order to start using Pocket Stackz with your wordlists you have to install the latest desktop Stackz(v.2.1) software. New desktop Stackz can import/export wordlists with the format that Pocket Stackz requires.

Information about the latest available Stackz version can be found here: <http://www.stackz.com>

1. Minimal requirements

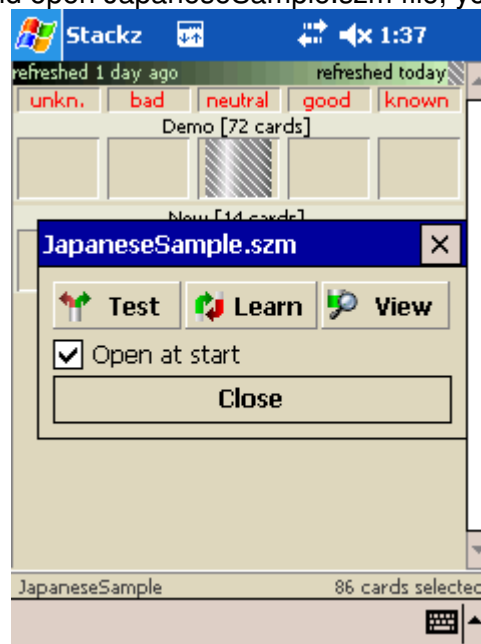
- Pocket PC 2002;
- ARM processor;
- 32MB SDRAM;
- 240x320 TFT Display;
- Japanese or Chinese UNICODE fonts, depending on the language you learn.

An extended storage card (CF, SD, MMC, etc.) is recommended in order to install additional UNICODE fonts you might need.

2. How to Install Pocket Stackz and start using it

1. Start **StackzPPCSetup.exe** and follow instruction of the installation program.
2. While installation you will be prompted to chose install directory (destination). If your Pocket PC has a storage card, we suggest to install Pocket Stack to the storage card. This allows using UNICODE fonts installed on your storage card.
3. Tap Start / Program / Stackz on your PPC. This will start Pocket Stackz.

After you install Pocket Stackz and open JapaneseSample.szm file, you will see the following screen:



Note: Installation Program installs 2 wordlist files: "JapaneseEntryLevel.szm" and "LearnToSpeakChinese.szm".

3. How to synchronize wordlists with your Pocket PC

Let's assume that you are using Microsoft ActiveSync and entire "**\My Documents**" folder on your Pocket PC is synchronized with the "**My Documents\Pocket_PC My Documents**" folder on your PC. Installation program creates a new directory "**\My Documents\Stackz**" on your device to keep wordlists. Thus, the "**My Documents\Pocket_PC My Documents\Stackz**" folder will be created on your PC by Microsoft ActiveSync.

In order to download a wordlist to the PPC you can do the following:

1. Open your wordlist by the desktop Stackz.
2. Save the wordlist as a Pocket Stackz file by the "Wordlists / Save as Pocket Stackz File..." menu.
3. Save your wordlist to the "**My Documents\Pocket_PC My Documents\Stackz**" folder. After Microsoft ActiveSync synchronizes Stackz folder, you can open your wordlist by Pocket Stackz.

In order to open a Pocket Stackz wordlist by the desktop Stackz you can do the following:

1. Connect your PPC to the PC and let Microsoft ActiveSync synchronize all folders and files.
2. Start desktop Stackz.
3. Open Pocket Stackz file by the "Wordlists / Import PocketStackz File..." menu.

Note: There are 2 new toolbar buttons   that export/import Pocket Stackz files.

4. How to install additional fonts to your Pocket PC

If your PPC is working under the English Windows CE, you may need to install an additional UNICODE font. Pocket Stackz can use any UNICODE font you would like. Basically, there 2 ways to install a new font onto your PPC:

1. Copy a font file to the **\Windows\Fonts** folder. Installing fonts this way is a convenient one, but you might not have enough memory on your device. This can be the case if you are installing a big TTF font.
2. If you have installed Pocket Stackz on the storage card, you can copy a font file to the **\Storage Card\MindDate Software Stackz\Fonts** directory. After you restart Stackz it will start using the new font from this directory. This way will definitely help you to save main memory.

Note: Asian fonts can be downloaded from the Microsoft web page. Search for the "language pack" on www.microsoft.com to get font you need. You can also visit our web page <http://www.stackz.com/links.htm> or contact us via email to get fonts specific info.

Additional help info is available by the "Tools/Help.." menu.